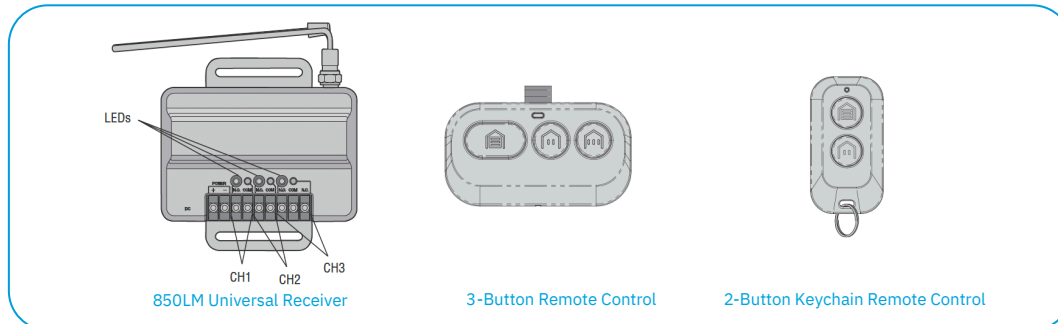
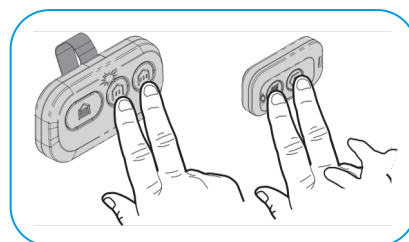


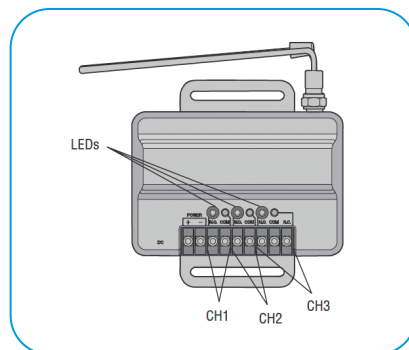
## QUICK CONNECT: PROGRAM REMOTE TO 850LM UNIVERSAL RECEIVER



- 01** Press and hold the two smaller buttons on the remote simultaneously until the red LED stays on (typically within 6 seconds).

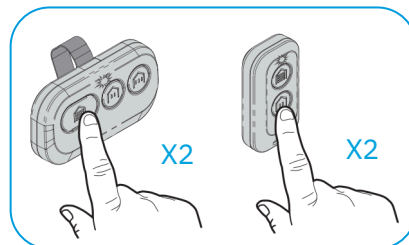


- 02** Press and immediately release the channel you want to program (CH1, CH2, OR CH3)



- 03** Within 20 seconds of pressing the LEARN button, press and release the remote button you would like to program **twice**. The red LED will Flash intermittently. Wait until the red LED stays on.

**WARNING:** Your garage door opener light will flash and your garage door will move.



- 04** Follow the same steps to program the other channels.

